



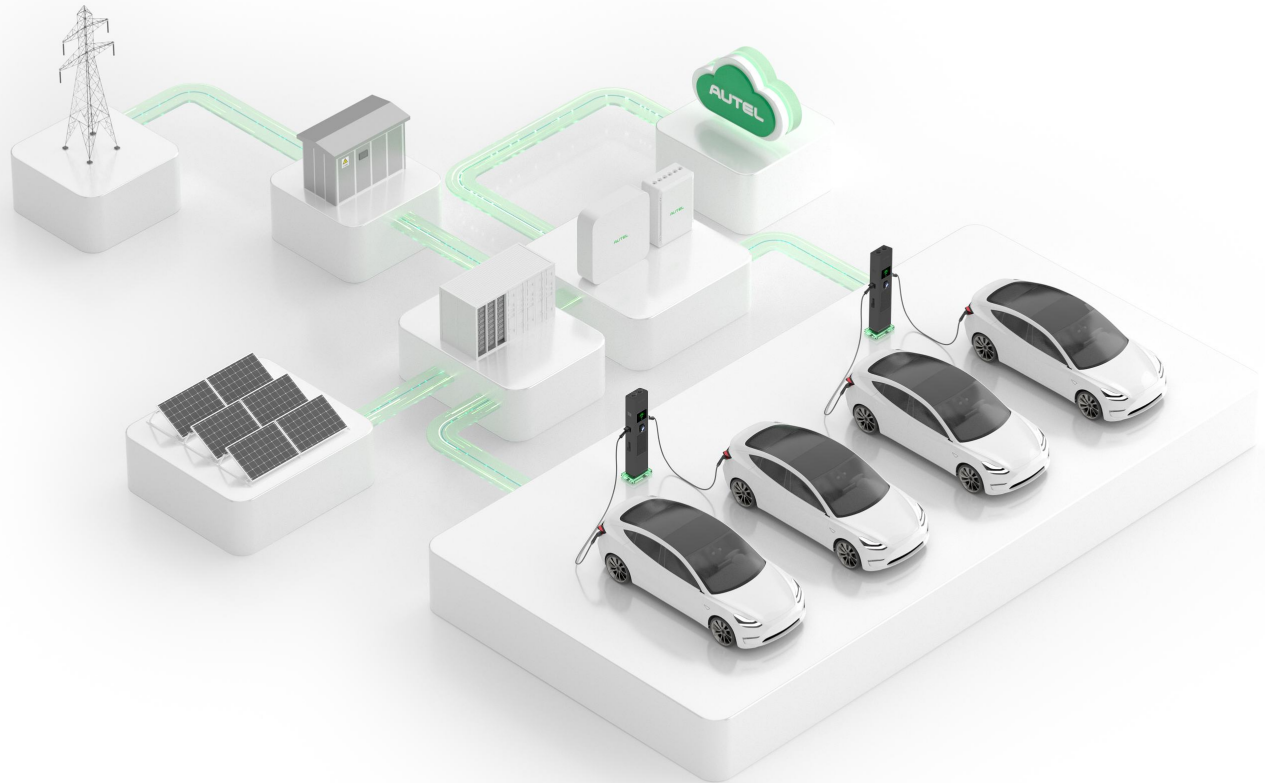
MaxiCharger

AC Ultra(Street)



MaxiCharger AC Ultra

The Fastest AC Charger for Two Vehicles



Fast and Efficient

Create an exceptional charging experience

- At 22kW per port this charger leads the industry by fast charging 2 vehicles simultaneously, and generates 140 km of range within 60 min
- Designed with ISO 15118 Plug & Charge, for a hassle-free charging experience



Best-value Design

Tailored for commercial deployment

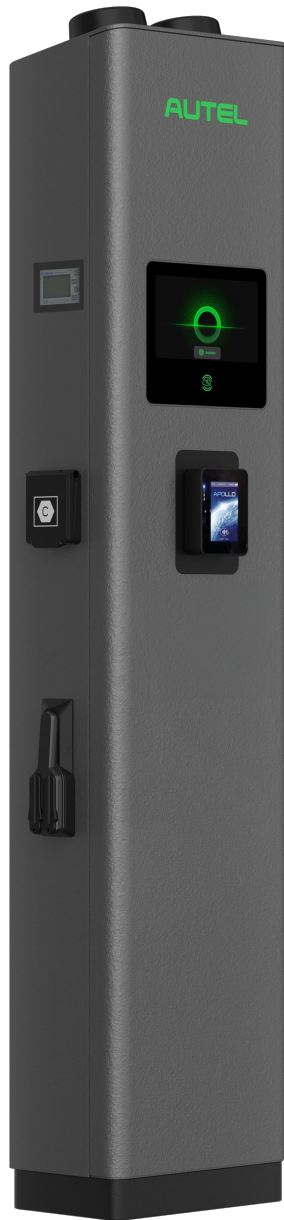
- Rugged design allows it to be floor-standing to support your application needs One-piece
- Construction makes it easy to install resulting in lower costs and a faster ROI



Smart Charging

Future-proof, flexible and improves your bottom-line

- Smart functionality with OCPP compliance, can adapt its power usage and provide optimal charging today and into the future
- Reduce capital investment in power capacity



Power Sharing



OCPP Compliance



Weather Resistant



APP, RFID Card,
Credit Card,
Mobile Payment



One-Stop Cloud
Network
Management



8-inch HD
Advertising Screen

Technical Specifications

Product Information	
Charging mode	Mode 3
Input/output power rating and current	Three-phase up to 2*22kW/32A
Input/output voltage	400V±15%, three-phase; 50Hz
Network type	TT, TN, IT (Single-phase/Three-phase)
Connector type	IEC 62196 Type 2 Socket or Socket with shutter
Residual current detection	TypeA 30mA+ DC 6mA
Protection	Overcurrent, overvoltage, undervoltage, integrated surge protection
Card reader	ISO 15693, ISO 14443
Metering accuracy	± 1.0%; Build-in MID Certified meter
General Characteristics	
IP and IK rating	IP54; IK10
Operating altitude	2000m
Operating temperature range	-30°C ~ +50°C
Storage temperature range	-30°C ~ +70°C
Mounting	Floor Standing
Dimensions (H×W×D)	1467 × 310 × 200 mm
User Interface	
Status indication	APP/LCD (8 inch touch screen, 1280*720)
User interface	Autel Charge APP; Autel Charge Cloud
Connectivity	Wi-Fi, Ethernet, 4G, RS485
Communication protocols	OCPP 1.6J, OCPP 2.0.1
User authentication	APP, RFID card, Credit Cards (Optional)
Software Update	
Software update	OTA updates via web portal
Certification and Standard	
Safety standards	IEC/EN 61851-1, EN 62311, EN 62479, IEC/EN 62955,NEN-EN-IEC 61439-7
Certification	CE
Warranty	36 months, warranty extension possible

© Copyright 2024 Autel. All rights reserved. Specifications subject to change without notice.

